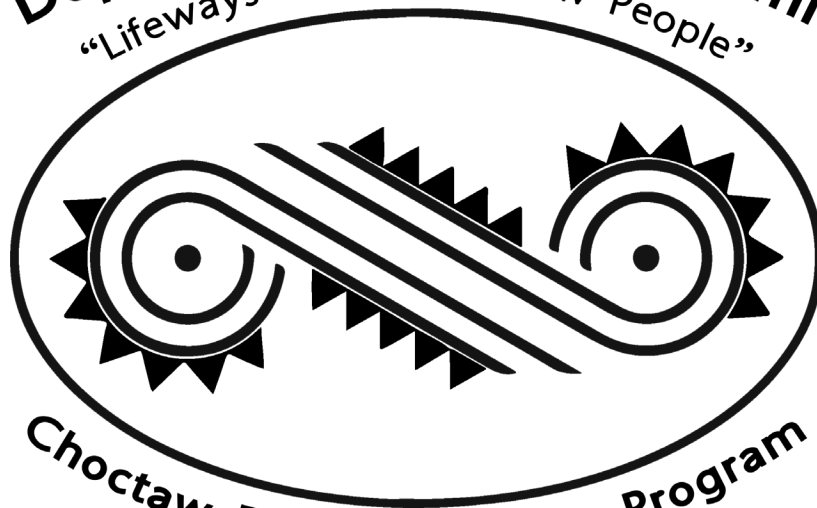


Nanik Waiya Nittak

Greetings from the Choctaw Tribal Language Program. The following pages include Nanih Waiya Day themed activities.

The translations below are a sample of Nanih Waiya Day related terms in Choctaw. We at the Choctaw Tribal Language Program encourage families to use the translations they are most familiar with even if they are not included in the following activities. Call the number at the bottom of the page if you would like a translation added to the word list in the future.

Department of Chahta Immi
“Lifeways of the Choctaw People”



Choctaw Tribal Language Program

Nanih Waiya Nittak Annopa

Practice these Nanih Waiya Day related terms in Choctaw.



átoyya



bók



Chahta Alhíha



hilha alhíha



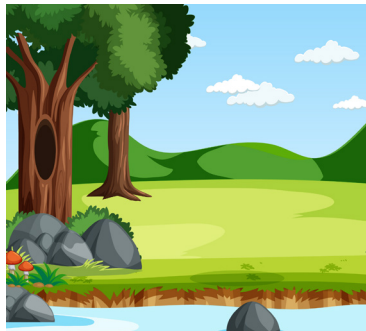
iti patápo



kabotcha tóli



Nanih Waiya



yakni



yakni
hochokbi

Ittachápa Ahóchi

Cut the images along the dotted line. Mix the cards and lay them face down. If a player finds a pair they can say “ahóchilih” and the Choctaw word to practice the family related terms.



átoyya



átoyya



bók



bók



Chahta Alhíha



Chahta Alhíha



hilha alhíha



hilha alhíha



iti patápo



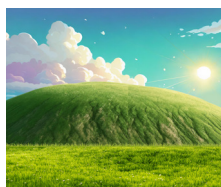
iti patápo



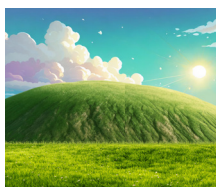
kabotcha tóli



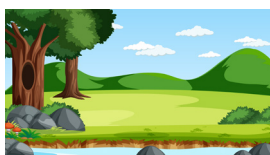
kabotcha tóli



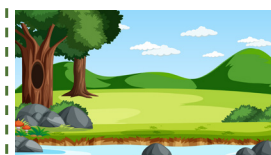
Nanih Waiya



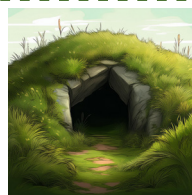
Nanih Waiya



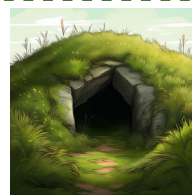
yakni



yakni



yakni hochokbi



yakni hochokbi

Holbattoba Qmiláyachi

Color the pictures below and tell what the summer related terms are.



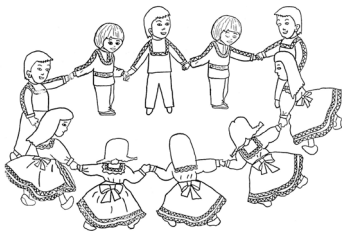
átoyya



bók



Chahta Alhíha



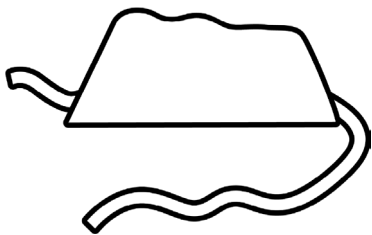
hilha alhíha



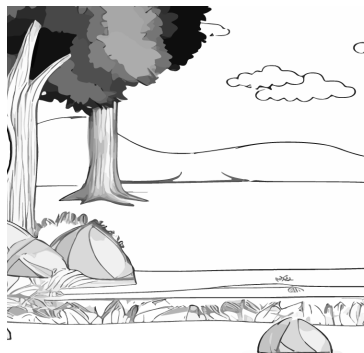
iti patáop



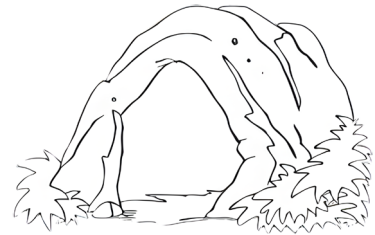
kabotcha tóli



Nanih Waiya



yakni



yakni hochokbi



Ánówa Iyákayya

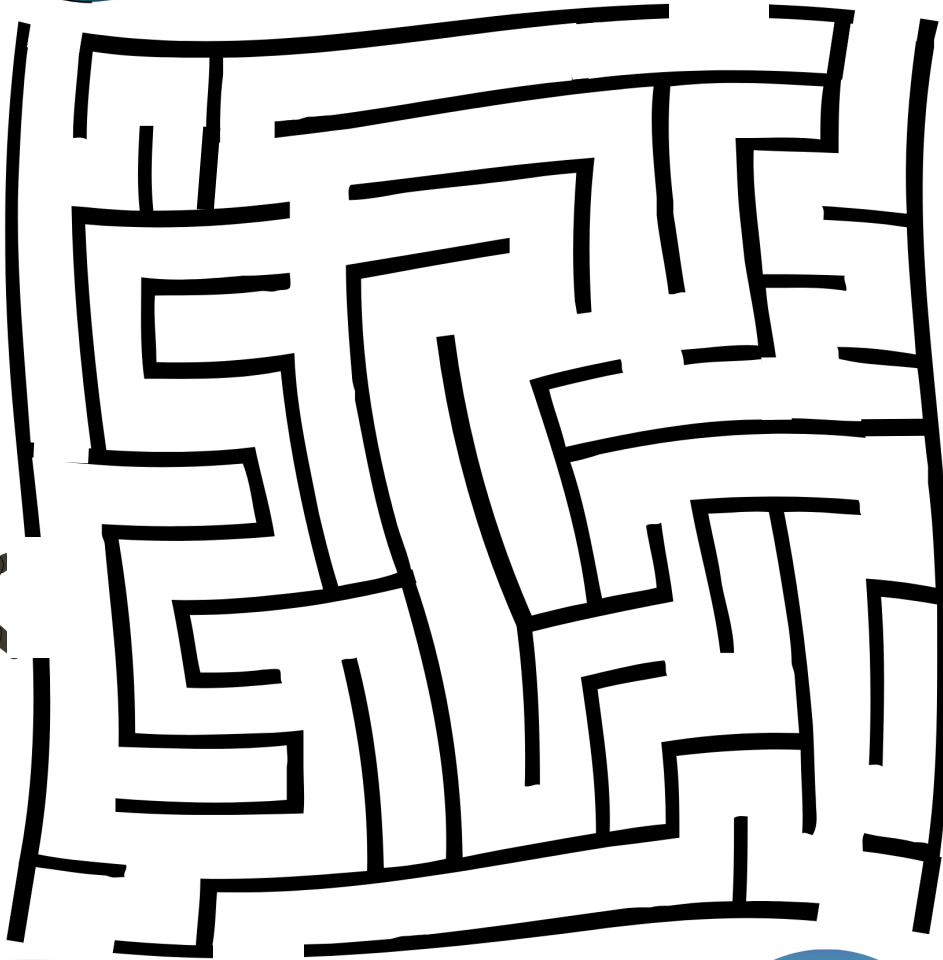
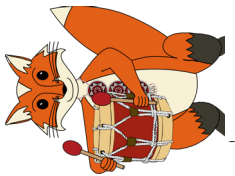
Help nita, issi, cholah, and shokka get to where they are going by drawing a line from each character to their desired destination.



Halító, nita siyah.
Yakni hochokbi
iyálih.



Halító, cholah
siyah. **Nanih**
Waiya iyálih.



Halító, issi siyah.
Bók iyálih.



Halító, shokkóshi
siyah. **Iti patápo**
iyálih.



Annópa Ahóchi

Find all the terms. Pay close attention to long vowels (á, í, ó) & nasal vowels (a, i, o)

K S S W P Y I K A A B T Á S I
 N Ó K C Á B T M H Y O A S N N
 H H B Ó S Ó I H Í I C C K L Á
 Y C B H M O P L H A K A B Y O
 Q T H O Ó T A K L W Y I P N L
 B F Í W B L T F A H H F L F Ó
 T T Í L L Y Á Í A I N T Ó B K
 Y B W B I Á P Q T N P I Á B L
 I K S C K T O H H A Í Á N Ó Ó
 T Y O I Á K A H A N O B Y L A
 Á P A Y Y O T Á H P T K K T K
 I M I Í H K Q T C H I Í Á F B
 H I L H A A L H Í H A L K C Í
 I L Ó T A H C T O B A K L N N
 Y A K N I H O C H O K B I B Á

Modern Choctaw Alphabet

A a	alla
Á á	amáfo
Ạ ạ	akaka, chapoli
B b	bashpo
Ch ch	chito, fichik
F f	fani
H h	hattak
I i	iksho
Í í	apíla
Ị ị	ishi, ipa
K k	kapassa
L l	loksi
Lh lh	ilhkóli, alhíha
M m	miko
N n	nashóba
O o	oshta
Ó ó	bók
Ọ ọ	chokash, oba
P p	pisa
S s	siti
Sh sh	shoshi, shawi
T t	tali
W w	washóha
Y y	yakókih



átoyya



bók



Chahta
alhíha



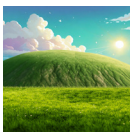
hilha
alhíha



iti patápo



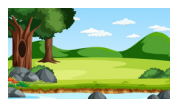
kabotcha
tóli



Nanih
Waiya



yakni
hochokbi



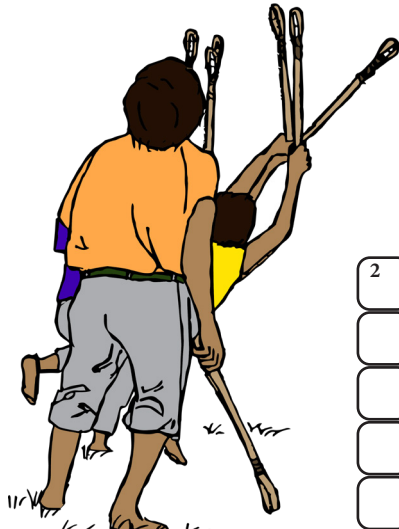
yakni

DIPHTHONG

Ai ai, Ay ay hayyip, ayittatoba

Annopa Ápitta Washóha

Use the clues to complete the crossword puzzle.



Akka Iya

down

1. west (direction)
2. stairs, steps
3. sacred pole
6. green
7. cave
9. wooden bridge
11. land, ground, earth, world, country
13. to climb up, ascend

Okfowáta Iya

across

1. long ago
4. tree
5. leaning mound
8. east (direction)
10. prophet
12. grass



Chahta ᵀ Yakni

Find Nanih Waiya and your community on the map below. Use the example phrases to learn place based phrases in Choctaw. Change out the words in brackets.



Pearl River



Crystal Ridge



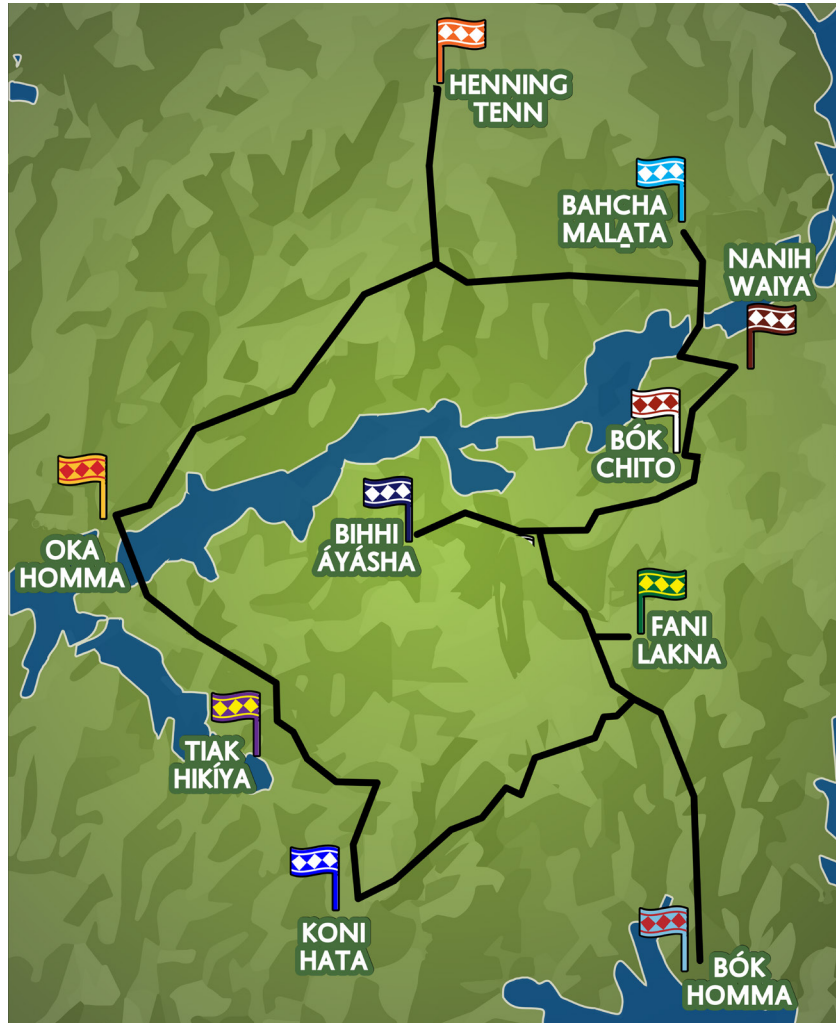
Bogue Chitto



Bogue Homma



Tucker



Henning, TN



Conehatta



Nanih Waiya



Red Water



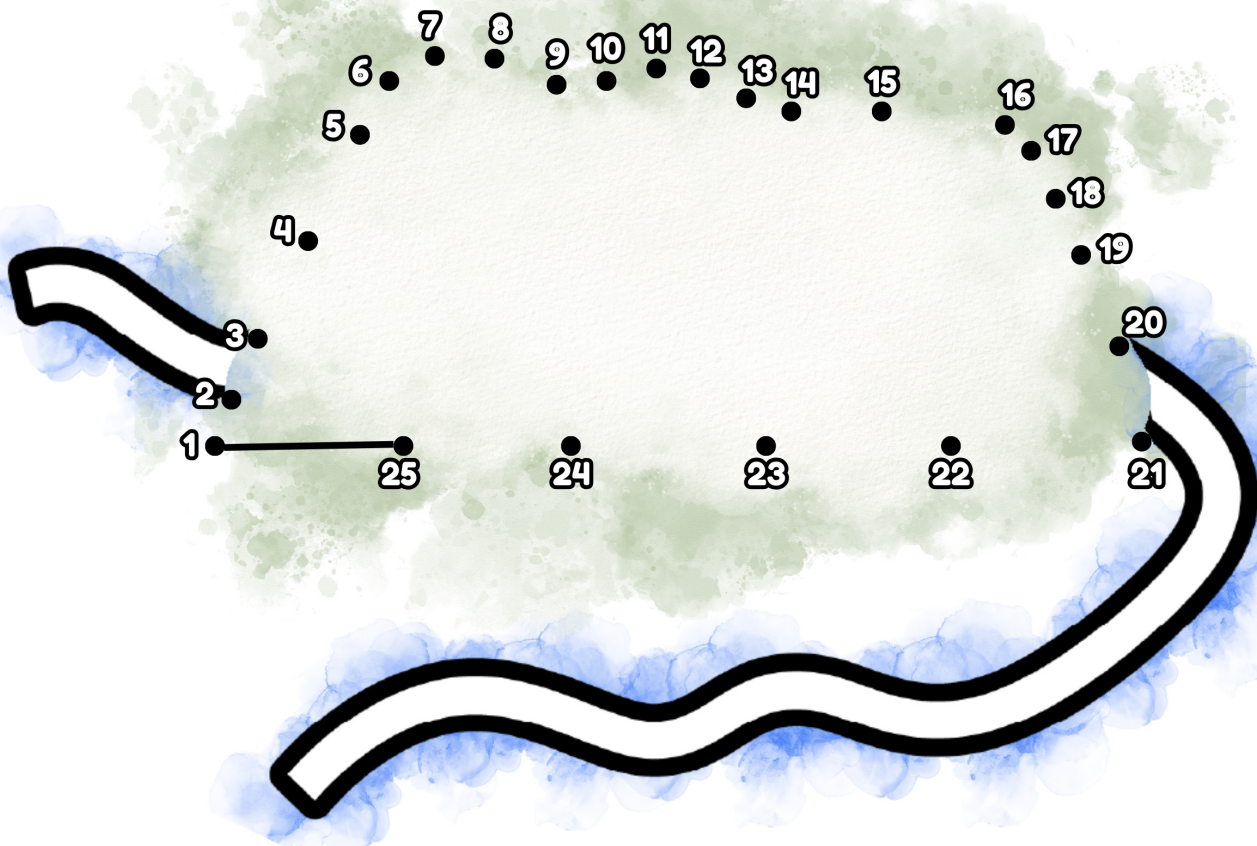
Standing Pine

[Bihhi Áyásha] ámitili. I am from [Pearl River].
 [Nanih Waiya] kil ilhkólih. Let's go to [Nanih Waiya].
 [Oka Homma] atoh? Where is [Red Water]?
 [Bók Chito] ish ámiti yᵀ? Are you from [Bogue Chitto]?
 Okla áyásha katimápokakᵀ ish ámiti? Which community are you from?

Choctaws celebrate Nanih Waiya Day on the second Friday of August to honor August 8, 2008, the day when MBCI received Nanih Waiya back from the state of Mississippi.

Holbattoba Tahli

Connect the dots from 1-25 to complete the image. Use the list at the bottom to practice saying the numbers in Choctaw.



- | | | |
|--------------|--------------------|------------------------------------|
| 1 achaffah | 11 awah achaffah | 21 pokkóli toklo akotcha achaffah |
| 2 tokloh | 12 awah tokloh | 22 pokkóli toklo akotcha tokloh |
| 3 tohchínah | 13 awah tohchínah | 23 pokkóli toklo akotcha tohchínah |
| 4 oshtah | 14 awah oshtah | 24 pokkóli toklo akotcha oshtah |
| 5 tahlhápih | 15 awah tahlhápih | 25 pokkóli toklo akotcha tahlhápih |
| 6 hannálih | 16 awah hannálih | |
| 7 ɔtokloh | 17 awah ɔtokloh | |
| 8 ɔtohchínah | 18 awah ɔtohchínah | |
| 9 chakkálih | 19 abih chakkálih | |
| 10 pokkólih | 20 pokkólih tokloh | |

Chahta Annopa

Use the following example questions and answers to enhance your language learning activities. Change out the words with other new terms or those you already know.

Ná Ponaklo Question

Falammit im áchi Responding Answer

Katikma Nanih Waiya Nittak?
When is Nanih Waiya Day?

Takkon hashi anóka Ibayyi nittak isht atokla.
The second Friday in August.

Katimma iya chinnah?
Where do you want to go?

Nanih Waiya ot kí pisah.
Let's go see Nanih Waiya.

Nátah ish pisah?
What do you see?

Iti patápo pisalih.
I see a wooden bridge.

aboyyah : to climb up, ascend

átoyya : stairs, steps

bók : creek

Chahta alhíha : Choctaw people

hashshok : grass

hashi ákotchaka : east (direction)

hashi áyokattola : west (direction)

hilha alhíha : dancers

hopayyi : prophet, seer

hopáki : long ago

iti : tree

iti fabassa : sacred pole

iti patápo : wooden bridge

kabotcha tóli, kabotcha washóha :
stickball game, stickball player

Nanih Waiya : leaning mound

okchamáli : green

yakni : land, ground, earth, country

yakni hochokbi, yakni chilok : cave

NOTES



OKFOWÁTA IYA

1. hopáki
4. iti
5. Nanih Waiya
8. hashi ákotchaka
10. hopayyi
12. hashshok

AKKA IYA

1. hashi áyokattola
2. átoyya
3. iti fabassa
6. okchamáli
7. yakni hochokbi
9. iti patápo
11. yakni
13. aboyyah